

PARALLEL SLIDING SYSTEM

DGPV DOUBLE SLIDE SYSTEM

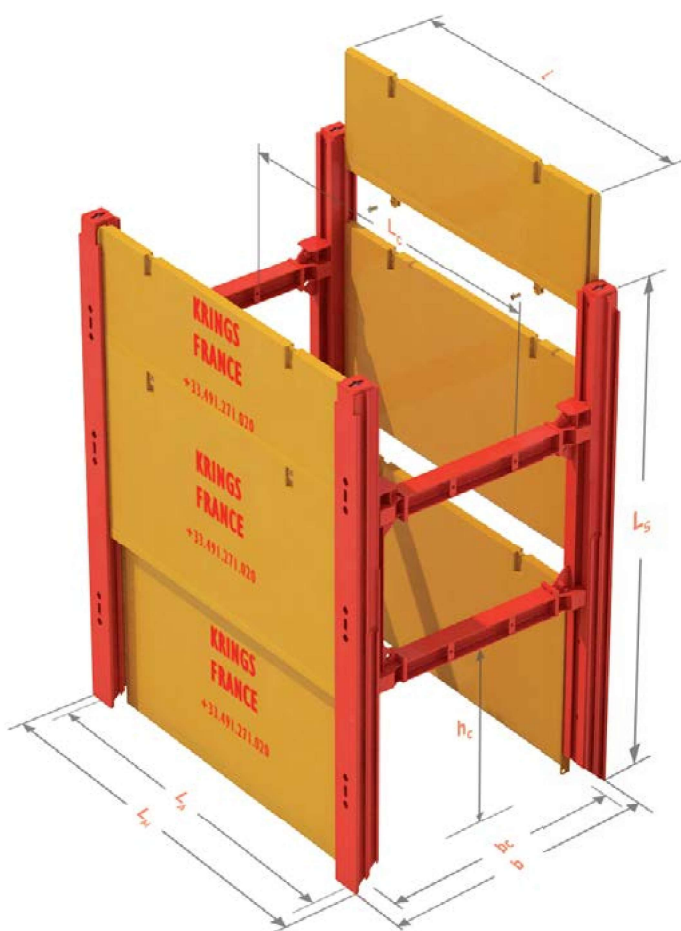


Recommended Depth	Max. 8.0 m
Length of Rail	4.8 / 6.0 / 7.5 m
Weight of Rail	1075 / 1355 / 1780 kg
Bending Moment	1020 / 1020 / 1106 kN.m
Stretch Length	2.0 m - 6.25 m
Lifting means	excavator \approx 25 to 45t

➤ The excellence and most commonly use Double Slide System on job sites. The panels are guided and slide down through the robust double slide rails. The double slide Rails stand parallel, while pushed down with the bucket; and the sliding HEB frame or "buggy car" assures a constant width.

➤ The individual action exercised on every element separately, facilitates the removal and extraction, so reducing the strengths of friction of the retained ground.

PARALLEL SLIDING SYSTEM DGPV DOUBLE SLIDE SYSTEM



H	Panel height
L	Panel length
L_c	Clearance space between sliding frames
L_s	Rail length
L_m	Overall length
b_c	Effective width between panels
b	Overall width
h_c	Vertical Clearance under sliding frame



PARALLEL SLIDING SYSTEM

DGPV DOUBLE SLIDE SYSTEM



Base Panel LxH	Panel Height	Panel Weight	Overall length L_m	Clearance between sliding frames L_c	Panel thickness t_{pl}	Maximum load ed
[m]	$\frac{\text{Base panel [m]}}{\text{Top panel [m]}}$	$\frac{\text{Base panel [kg]}}{\text{Top panel [kg]}}$	[m]	[m]	[mm]	[kN/m ²]
KR 2.00	$\frac{2,4}{1,4}$	$\frac{510}{335}$	2.56	2.10	100	171.6
KR 2.50	$\frac{2,4}{1,4}$	$\frac{605}{395}$	3.06	2.60		110.4
KR 3.00	$\frac{2,4}{1,4}$	$\frac{690}{450}$	3.56	3.10		81.1
KR 3.50	$\frac{2,4}{1,4}$	$\frac{805}{525}$	4.06	3.60		56.6
KR 4.00	$\frac{2,4}{1,4}$	$\frac{1165}{745}$	4.56	4.10	120	71.0
KR 4.50	$\frac{2,4}{1,4}$	$\frac{1305}{830}$	5.06	4.60		56.2
KR 5.00	$\frac{2,4}{1,4}$	$\frac{1630}{1020}$	5.56	5.10		73.1
KR 6.25	$\frac{2,4}{1,4}$	$\frac{3510}{2315}$	6.78	6.33		66.0

For any other dimensions, please consult us.

Tensile forces at the points of extraction, connection and towing (in the vertical direction) :

- Lifting ring at the rail head $R_d=229\text{kN}$
- Lifting eyes at the panel head $R_d=229\text{kN}$
- Bottom eyes of the panel $R_d=47\text{kN}$



PARALLEL SLIDING SYSTEM

DGPV DOUBLE SLIDE SYSTEM



Type of rail	Length	Thickness of rail	Bending moment	Weight
	[m]	[mm]	[kNm]	[kg]
DGPV	4.80	320	1020	1075
DGPV	6.00	320	1020	1355
DGPV	7.50	325	1106	1780

Type of Sliding Frame	Length	Spacer dimension	Minimum width between panels	Weight
	[m]	[mm]	[m]	[kg]
DGLW	2.00	240*305	0.73	308
DGLW	2.80	240*305	0.73	343
DGU-LW	1.45	300*580	0.92	488

